



La Putyka

Technical Rider

CONTENT

- 1 Stage Plan
- 2 Lighting Plan
 - 2 Floor
 - 3 Top Couples
- 4 Sound & Other

CONTACTS

PRODUCTION

Vít Novák

T +420 775 071 110

E vitek@laputyka.cz

www.laputyka.cz

SOUND

Robert Matoušek

E robocomp@seznam.cz

LIGHTS

Jan Mlčoch

E jan.mlcoch@archatheatre.cz

1

Stage Plan

DESCRIPTION

Stage – minimal size

11 meters – deep
 11 meters – wide
 6 meters – high

Marley dance floor

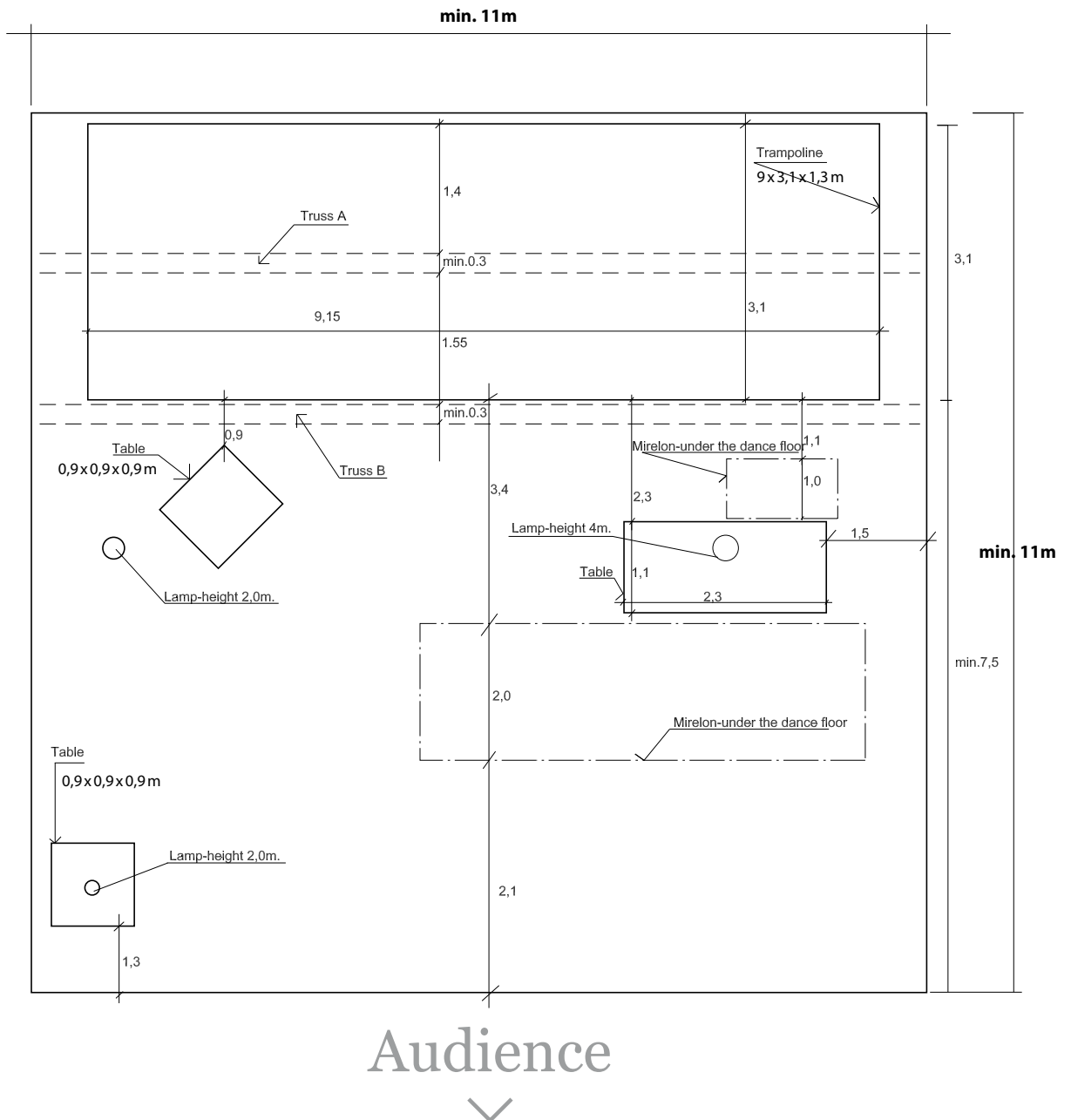
8 meters – deep
 12 meters – wide
 + 4x packages of tape on dance floor

Truss A – jumping

min. width 30 cm
 min. height 5,8 m
 min. load 100 kg
 with bulbs

Truss B – with curtain call

min. width 30 cm
 min. load 100 kg






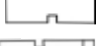



2

Lighting Plan – Floor

DESCRIPTION

Drawn by jan.mlcoch@archatheatre.cz

	10 x PAR 64 CP 62		8 x PC 1kW WITH BARNDOORS
	18 x PAR 64 CP 61 or CP 60		8 x FRESNEL 1kW WITH BARNDOORS
	5 x LED PAR 64 or PAR 64 CP 62		3 x STAND
	6 x ZOOM PROFILE 25 - 50 or FIX 50 degrees		8 x FLOORSTAND
	2 x ZOOM PROFILE 18 - 36 or FIX 19 + 36 degrees + 1 iris		1 x HAZER

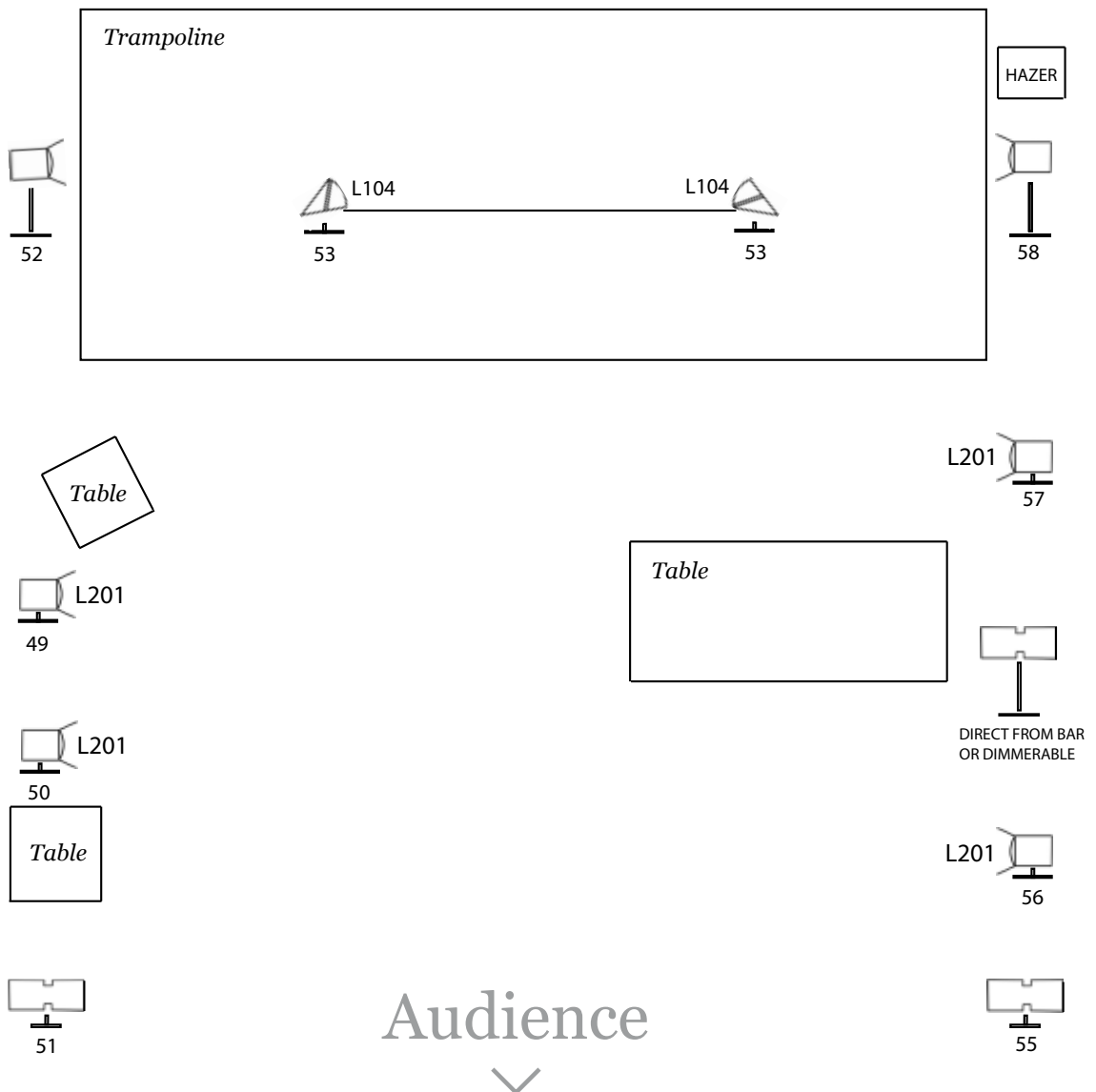
Power supply: ideal 2 x 63A, min. 1 x 63A and 1 x 32A (380V)

DIMMER PACKS: 48 channels @ 2,3kW

Lighting desk: LT Hydra, Strand, ETC, Compulite (programming desk)
ladder/tubular scaffolding/lift (Genie) till 6m or till your grid

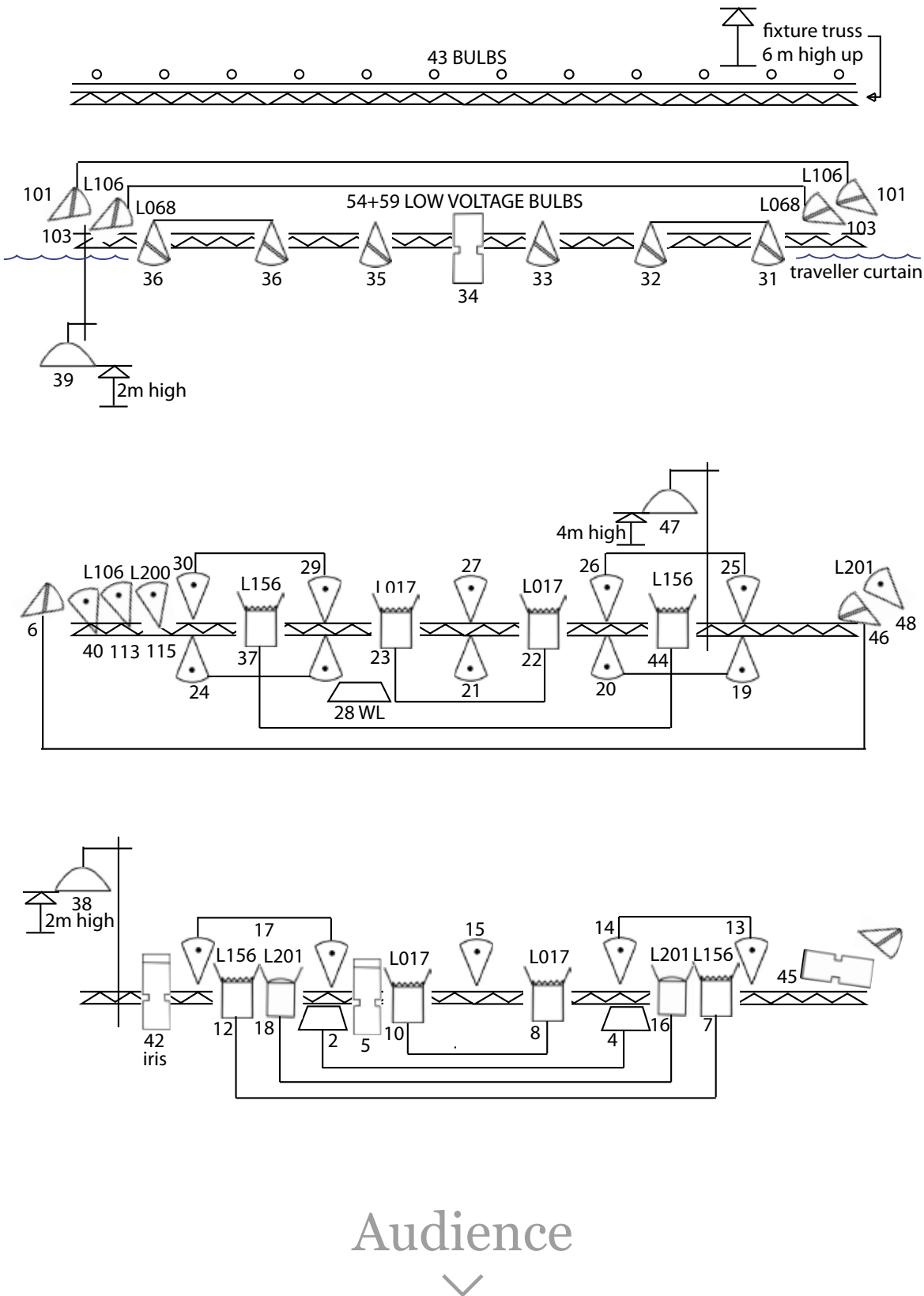
MINIMUM: 42 channels @ 2,3 kW

DO NOT SCALE



3

Lighting Plan – Top Couples



4

Sound

LIST OF COMPONENTS

- Quality 3-way stereo PA with subbas (L'Acoustics, Meyer, Nexo ...)
- **2x** monitor wedge for band on 2 monitor mixes (FM115, 112HiQ ...)
- Mixing console min. 12in, 4aux
- **2x** 2ch EQ (Klark DN360)
- **1x** Hall (Lexicon, Yamaha ...)
- **1x** Delay (TC D2)
- **2x** Compressor (DBX 1066)
- **1x** CD player
- **2x** Mic SM58 or other vocal mic on stand
- **1x** wireless vocal mic
- **2x** Dibox for El.Drums output (with jack cables)
- **2x** Dibox for Keys output (with jack cables)

The sound console to be placed in AUDIENCE SPACE, not in a booth!

Other

TECHNICAL REQUIREMENTS

- **40x** Bottles of beer
- **2x** packages of cigarettes
- **1x** bottle of milk
- **1x** bottle of Ice tea
- **100x** small tea's candels